

Written by: Alex Rodriguez, ElGGoDo.net, July 2006. - v3.

Modifying *WinEdt 5 (v.5.4.)* to run MiKTeX 2.5

Do the following steps:

1. Install MiKTeX then WinEdt 5 (v.5.4.) using the standard installation procedure
2. Open the Configuration Wizard by going to *Options/Configuration Wizard...* (please refer to Figure 1 and 2)
3. Click on the the *Diagnosis tab* at the top of the screen. Then click on the large *Execution Modes* button on the bottom right of the window.
4. In the *Execution Modes dialog box* (please see Figure 3.). See position 1. in the Figure, click on the entry if it has a question mark (?) next to it. Write the correct path for that entry in position 2. and press the *ok* button (position 3) for each entry. Here is a list of possible entries you may wish to enter in position 3, depending on what you select in position 1. Which you select will depend upon your set up.

```
"C:\Program Files\MiKTeX 2.5\  
"C:\Program Files\MiKTeX 2.5\miktex\bin\  
"C:\Program Files\MiKTeX 2.5\miktex\bin\tex.exe"  
"C:\Program Files\MiKTeX 2.5\miktex\bin\latex.exe"  
"C:\Program Files\MiKTeX 2.5\miktex\bin\amstex.exe"  
"C:\Program Files\MiKTeX 2.5\miktex\bin\pdftex.exe"  
"C:\Program Files\MiKTeX 2.5\miktex\bin\pdfplatex.exe"  
"C:\Program Files\MiKTeX 2.5\miktex\bin\bibtex.exe"  
"C:\Program Files\MiKTeX 2.5\miktex\bin\makeindex.exe"  
"C:\Program Files\MiKTeX 2.5\miktex\bin\dvips.exe"  
"C:\Program Files\MiKTeX 2.5\miktex\bin\vipdfm.exe"  
"C:\Program Files\MiKTeX 2.5\miktex\bin\texify.exe"
```

5. In the Startup Macro (Figure 4). Change the start up file to look like the following one; check the paths

i.e. C:\...

are correct for your system.:

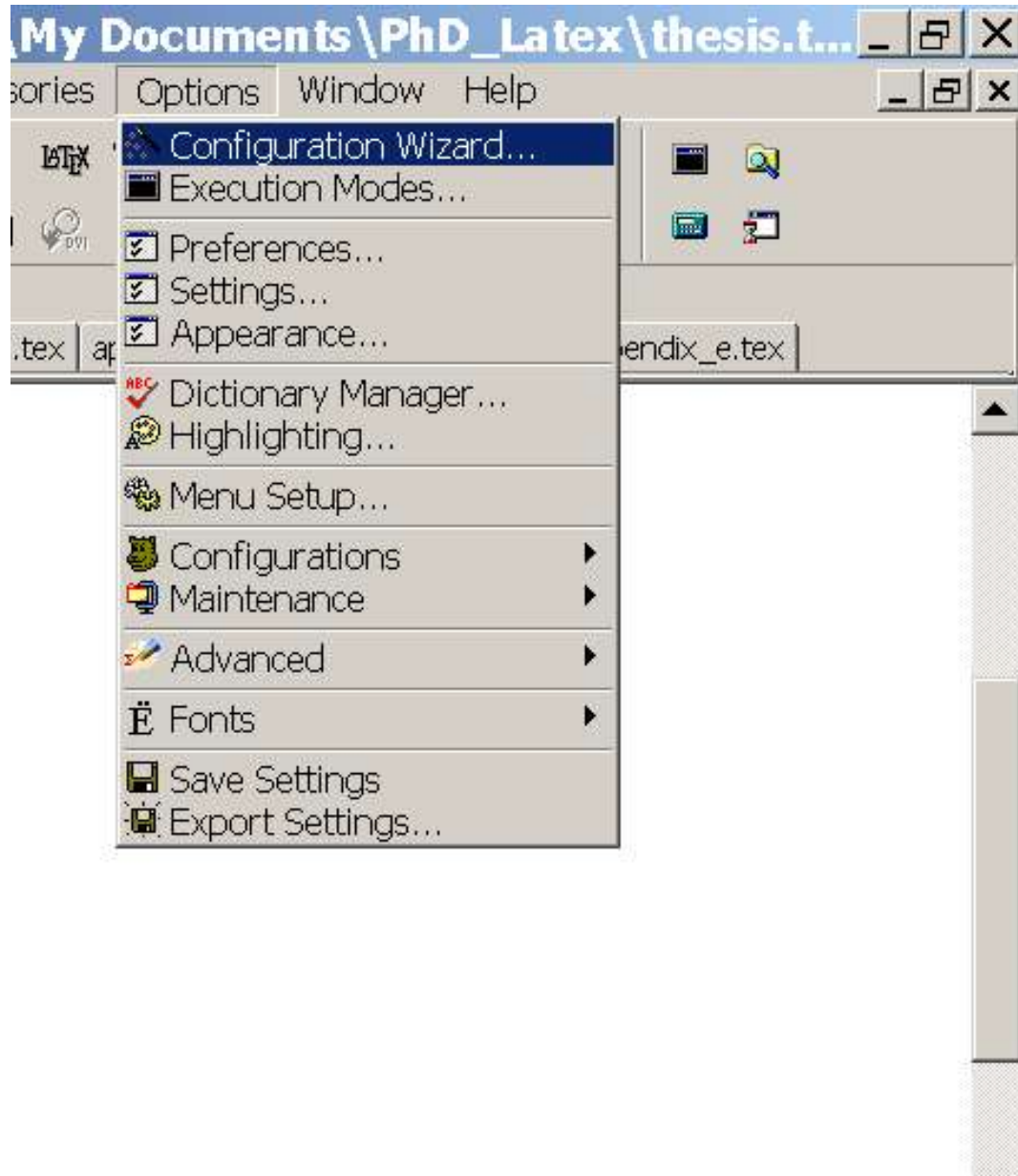


Figure 1: Options

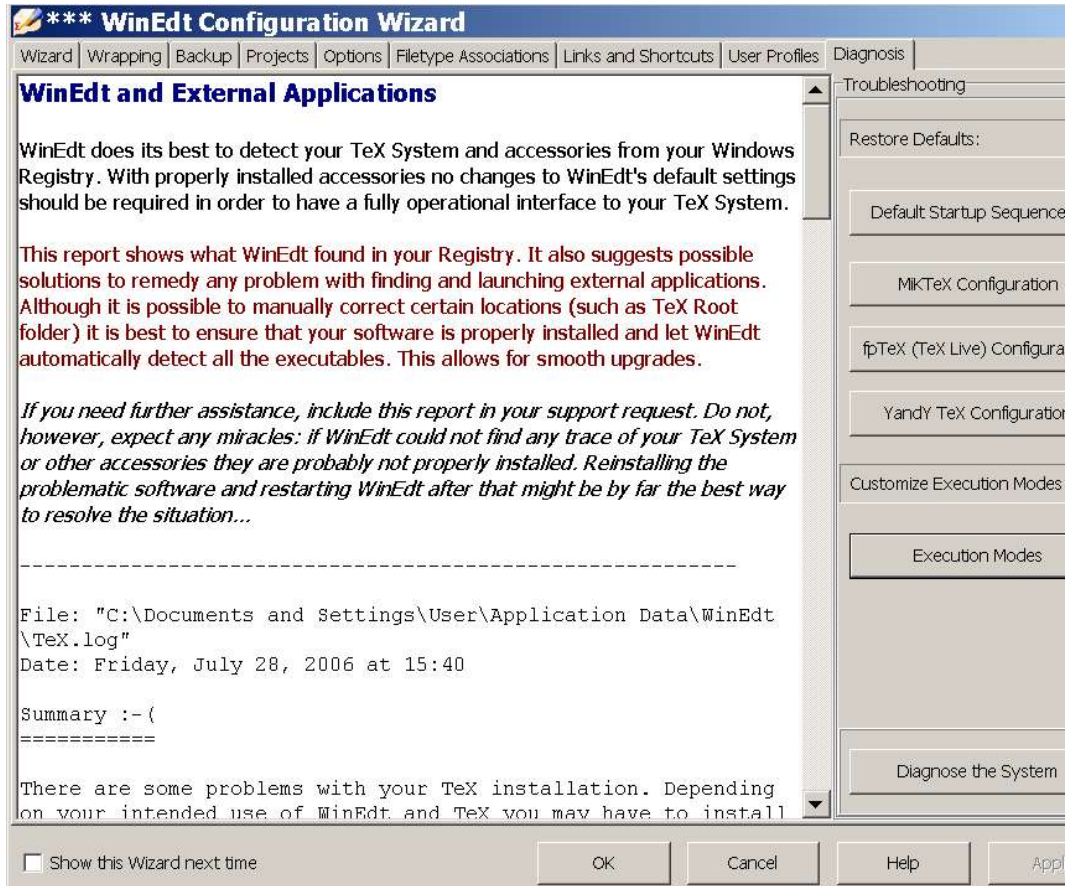


Figure 2: Configuration Wizard

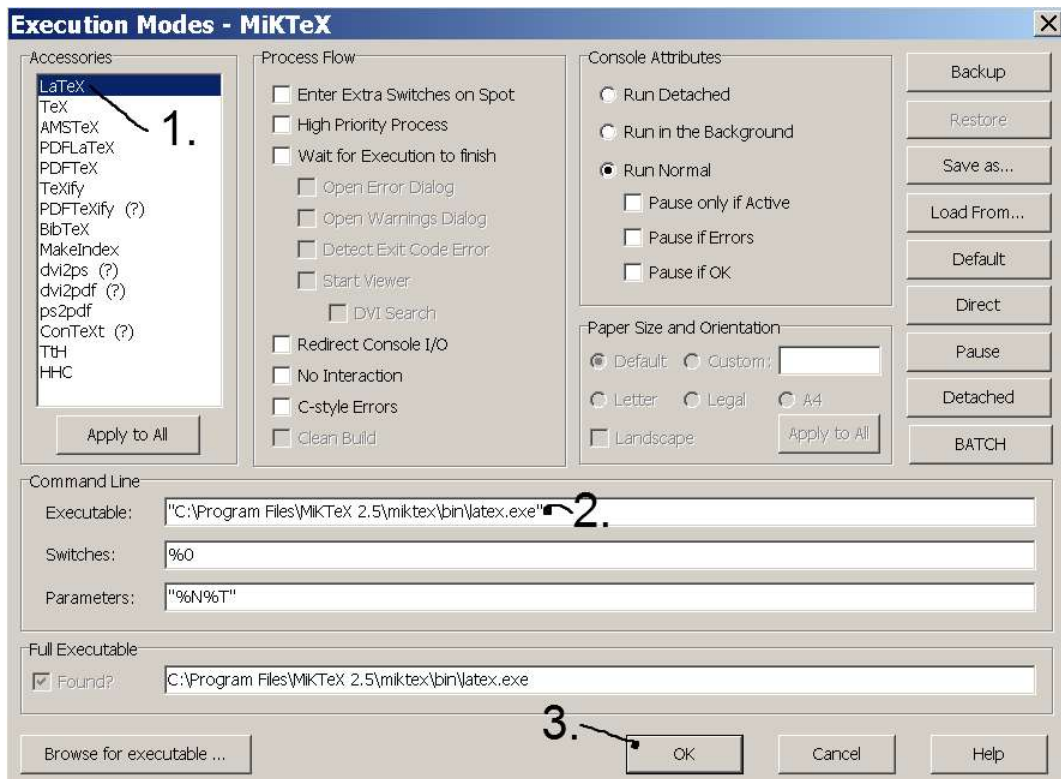


Figure 3: Execution Modes dialog box

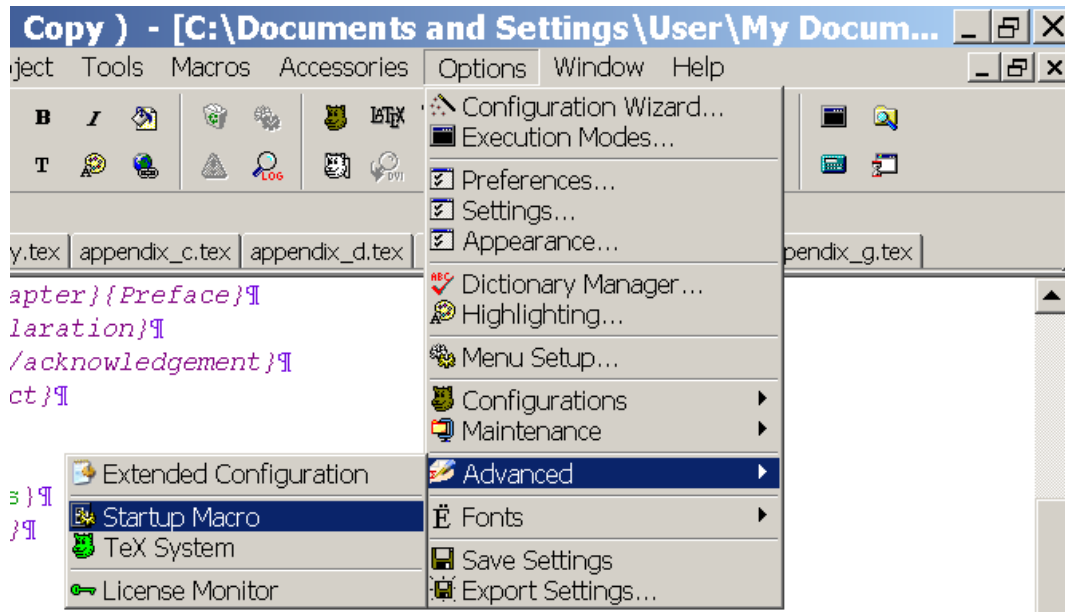


Figure 4: Startup Macro

```
Assign("TeX-Root","C:\Program Files\MiKTeX 2.5\");
Assign("TeX-Bin","C:\Program Files\MiKTeX 2.5\miktex\bin\");
Assign("TEX","C:\Program Files\MiKTeX 2.5\miktex\bin\tex.exe");
Assign("LaTeX","C:\Program Files\MiKTeX 2.5\miktex\bin\latex.exe");
Assign("AMSTeX","C:\Program Files\MiKTeX 2.5\miktex\bin\amstex.exe");
Assign("PDFTeX","C:\Program Files\MiKTeX 2.5\miktex\bin\pdftex.exe");
Assign("PDFLaTeX","C:\Program Files\MiKTeX 2.5\miktex\bin\pdflatex.exe");
Assign("BibTeX","C:\Program Files\MiKTeX 2.5\miktex\bin\bibtex.exe");
Assign("MakeIndex","C:\Program Files\MiKTeX 2.5\miktex\bin\makeindex.exe");
Assign("dvips","C:\Program Files\MiKTeX 2.5\miktex\bin\dvips.exe");
Assign("dvi2pdf","C:\Program Files\MiKTeX 2.5\miktex\bin\dvi2pdf.exe");
Assign("TeXify","C:\Program Files\MiKTeX 2.5\miktex\bin\texify.exe");
Assign("YAP","C:\Program Files\MiKTeX 2.5\miktex\bin\yap.exe");
Assign("GS-Bin","C:\Program Files\Ghostgum\gsview\gsview32.exe");
Assign("HHC","C:\Program Files\HTML Help Workshop\hhc.exe");
Assign("TtH","C:\Program Files\MiKTeX 2.5\tth_exe\tth.exe");
Assign("TeX-Local","C:\Program Files\MiKTeX 2.5"); // The same as Root in MiKTeX 2.5
Assign("TeX-Help","C:\Program Files\MiKTeX 2.5\doc\latex\help");
```

6. Once all the changes are made restart WinEdt and it should work as desired.